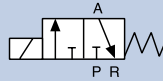


Heavy Duty 3/2 Way Pilot Valve Blocks

6014 Manifold

NPT 1/4", 0-145 PSI

- Extremely rugged
- Slip over coil design
- Manual override



Shown with 2508 plugs

Plug and play, pre-assembled and tested manifold solutions featuring our direct-acting 3/2 way normally closed solenoid valve. The valves are plunger operated and designed to work in process environments with double FKM seals and a strong 32mm coil. These small flexible systems are engineered specifically for process compressed air however Bürkert specializes in custom manifolds to suit any fluid purpose from 0.05mm to 4".

Technical Data

Pressure range	0-145 PSI, Max.
Temperature media	14 °F ... +212 °F
Ambient temperature	131 °F, Max.
Manual override	Yes
Body material	Brass
Manifold material	Anodized aluminum
Connections	NPT 1/4"
Valves	24 VDC (456 634) or 120 VAC (456 636)
Orifice	2 mm
Cv	0.13
Seal material	FKM
Coil material	Epoxy
Power consumption	DC: 8 W, AC: 24 VA (inrush), 17 VA (hold)
Protection class	IP65, NEMA 4
Electrical Connection	2509 Cable plug Form A (included)
Accreditations	UL Listed, FM Class 1, Div 2, CSA, CE

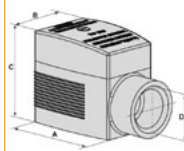
Options

- Manifolds of many engineering materials
- Intrinsically safe range (1 option shown in table as example)

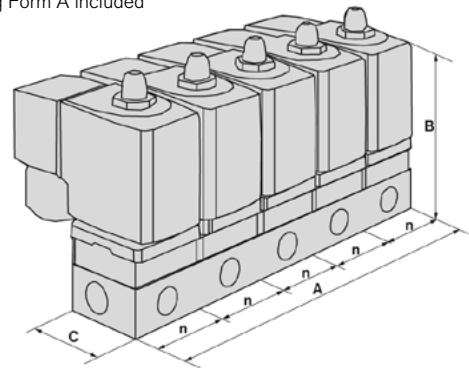
Ordering Chart for manifold mount valves

Voltage	Item no. standard	Item no. with manual override
24 VDC	456 626	456 634
120 VAC	456 628	456 636

Envelope Dimensions [inch] (see datasheet for details)



2509 cable plug Form A included (see page 30)

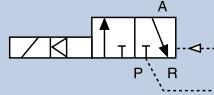
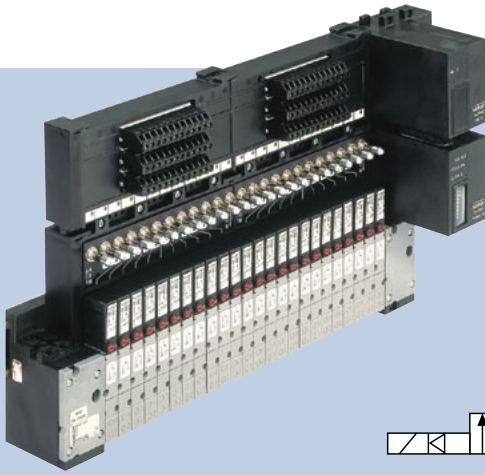


No. of blocks	A	B	C
2	2.56	1.77	3.30
3	3.86	1.77	3.30
4	5.16	1.77	3.30
5	6.46	1.77	3.30
6	7.76	1.77	3.30
7	9.06	1.77	3.30
8	10.35	1.77	3.30
9	11.65	1.77	3.30
10	12.95	1.77	3.30

Ordering Chart for manifold

Positions	Item no.
2	006 104
3	613 828
4	006 106
5	613 829
6	613 598
8	613 831
10	613 833

Pneumatic Solenoid Valve Island for Panel Mounting



5/2, 3/2 way or 5/2 way valves, bus or conventional communication

- Simple to configure and use
- DIN rail mounted
- DeviceNet or Profibus compatible



8640

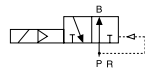
This process valve island offers many combinations of valve function together with fieldbus connectivity in an extremely compact envelope.

Technical Data

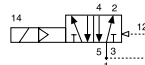
Body material	PA (polyamide)
Seal material	FKM, NBR
Media	Lubricated and non-lubricated dry air, neutral gases (5 µm-Filter)
Manual override	Yes
Voltage 24 V DC	24 V DC
Nominal power	2 x 1 W
Duty cycle	Continuous operation (100% ED)
Cv	0.28 / QNn = 300l/min
Pilot method	Flipper pilot
Circuit function	C 3/2 way normally closed
Pressure range	36.25 - 145 PSI
Orifice size	4 mm
Pneumatic outlet	Push in 1/4" tube

Options

- Further valves
- Further input/output slots
- Circuit function D (normally open 3/2 way valves)



- Circuit function H (5/2 way valves)



- 16mm wide valves with Cv of 0.64 / 600l/min
- Cover plates for open slots
- Fully installed in one piece cabinet
- RIO Interface to allow hundreds of valves and feedbacks on one bus node



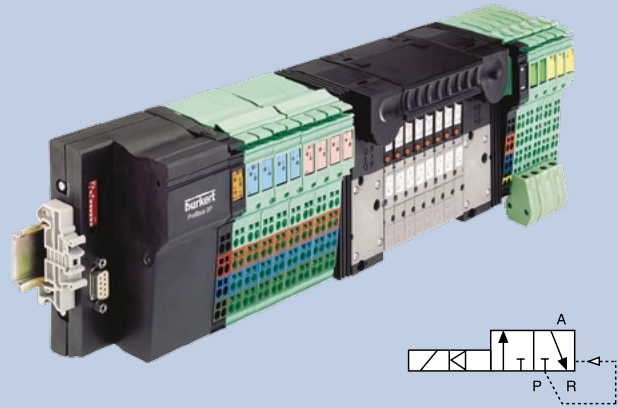
Ordering Chart

Communication	Item no. 16 valves (8 x (2 x 3/2 way))	Item no. 24 valves (12 x (2 x 3/2 way))
Individually wired (common ground)	217 928	217 934
Multipole 25 pin connector	217 930	217 935
DeviceNet	217 931	217 936
Profibus DPV 1	217 932	217 937

This chart shows only 8 simple configurations. The 8640 can be configured in a vast array of possibilities. Please visit the website for the configurators or call our experienced technical support.

3/2 way or 5/2 way valves plus analog and digital I/O, bus or conventional communication

- Combines fieldbus, I/O and pneumatic pilots
- Extreme application flexibility



Stemming from our expertise in the supervision and control of complete loops AirLINE is more than a valve island. It accepts a wide array of digital and analogue field inputs and sends digital and analogue outputs for exact control where it matters.

This unique device marries virtually any combination of valve island functionality and electronic signals to the widest range of fieldbus connectivity.

AirLINE leaves the freedom to choose between electronic modules as it creates a fully integrated fieldbus communication, process valve actuation and control platform.

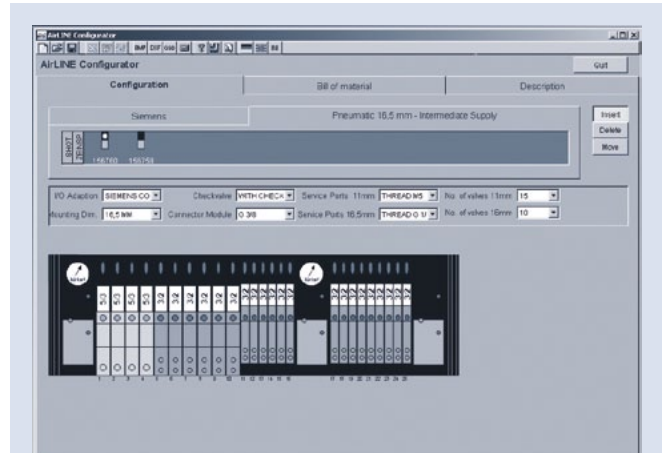
Special features make Bürkert AirLINE unique:

- Bürkert's exceptional process pneumatics designed and manufactured in Germany for valve actuation in the process environment
- Our ground-breaking modular system fit in your world and in your cabinet
- AirLINE with WAGO I/O System 750 and AirLINE with Siemens ET 200S can be used in hazardous applications in Zone 2
- With integrated P shut-off you are able to replace a valve even during operation
- Additional integrated check valves give a better protection for your installation
- Perfect process pneumatics with multiple communication possibilities

Technical Data

Body material	PA (polyamide)
Seal material	FKM, NBR
Media	Lubricated and non-lubricated dry air, neutral gases (5 µm-Filter)
Manual override	Yes
Voltage 24 V DC	24 V DC
Nominal power	2 x 1 W
Duty cycle	Continuous operation (100% ED)
Cv	0.28 / QNn = 300l/min
Pilot method	Flipper pilot
Circuit function	C 3/2 way normally closed
Pressure range	36.25 - 145 PSI
Orifice size	4 mm
Pneumatic outlet	Push in 1/4" tube

Configuration Software



AirLINE is a system of modular design which is precisely adapted to the specific requirements of the customer. Bürkert offers a software programme, the simple, precise generation of the required configuration of each AirLINE system.

The Bürkert Configurator defines

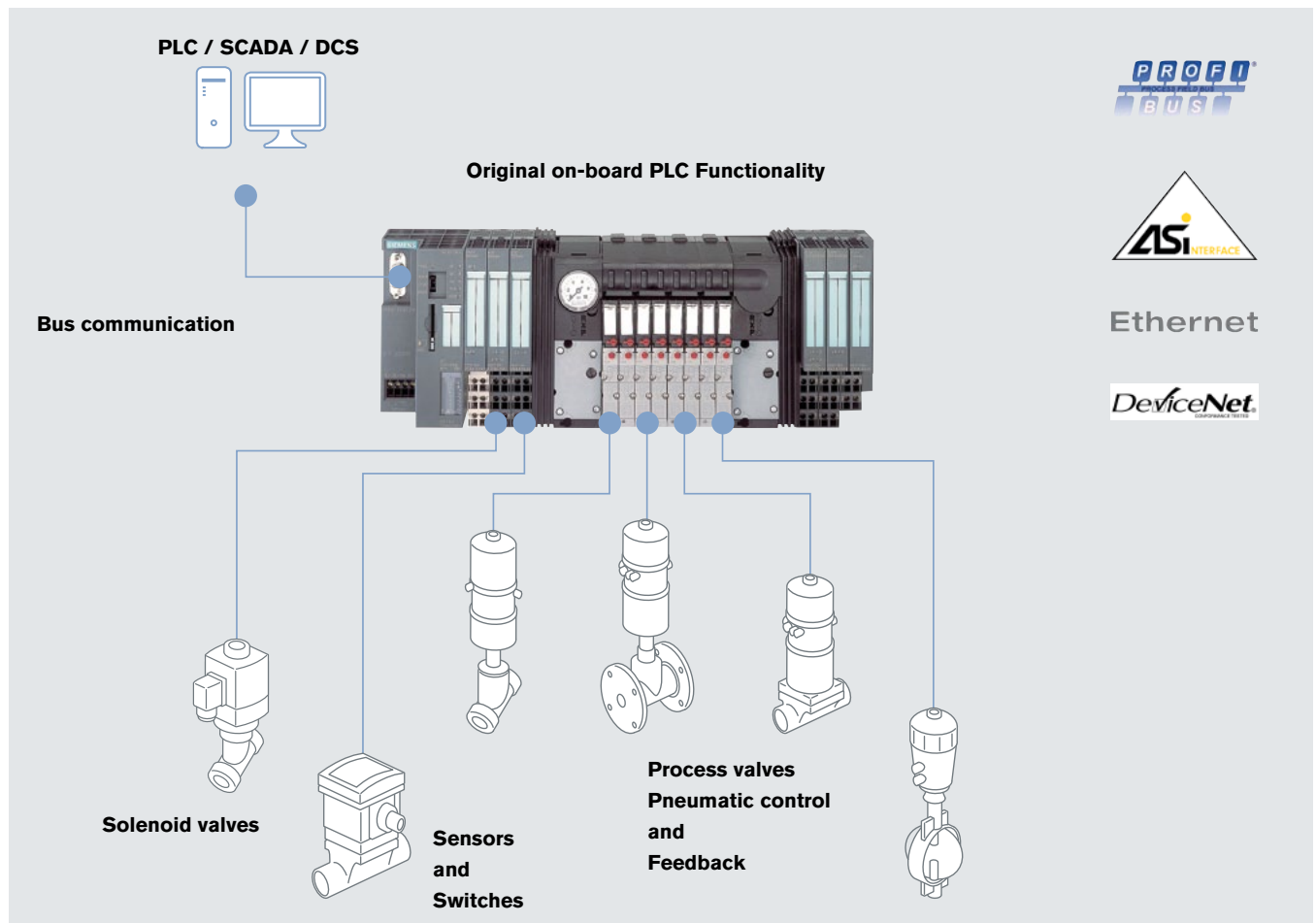
- Number and types of valves
- Type of (intermediate) supplies
- Combination of Fieldbus, pilot valves and I/O modules

The results supplied by the Configurator

- Bill of materials, incl. list prices
- Illustration
- Drawings

Options

- Further valves
- Further digital and analog input/output slots
- Allen Bradley, Wago, Phoenix Contact, Siemens compatible islands
- Circuit function D (normally open 3/2 way valves)
- Circuit function H (5/2 way valves)
- 16mm wide valves with Cv of 0.64 / 600l/min
- Cover plates for open slots
- Fully installed in one piece cabinet



Ordering Chart

Communication	Item no. 16 valves (8 x (2 x 3/2 way)) 16 digital inputs	Item no. 24 valves (12 x (2 x 3/2 way)) 24 digital inputs
AB	219 284	219 285
Siemens	218 197	218 198
Wago	218 194	218 196
Phoenix	218 193	218 192

This chart shows only 8 simple configurations. The 8644 can be configured in a vast array of possibilities. Please visit the website for the configurators or call our experienced technical support